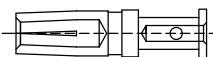
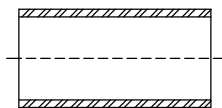


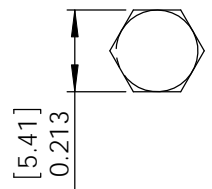
THE INFORMATION CONTAINED IN THIS DRAWING IS THE SOLE PROPERTY OF L-COM, INC. ANY REPRODUCTION IN PART OR WHOLE WITHOUT THE WRITTEN PERMISSION OF L-COM, INC. IS PROHIBITED.

REVISIONS			
REV	DESCRIPTION	DATE	APPROVED
B	Initial Release	08/13/09	B Puchaski
C	Update Crimp Sizes and Stripping Dims. ECN#4458	12/28/09	B Puchaski

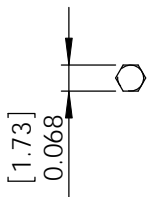
DESCRIPTION	MATERIAL	FINISH
CENTER CONTACTS	BRASS	GOLD
OUTER CONTACT	BRASS	NICKEL
CRIMP FERRULE	BRASS	NICKEL
GASKET	RUBBER	---
INSULATOR	TEFLON	---



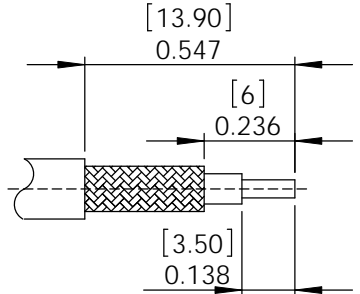
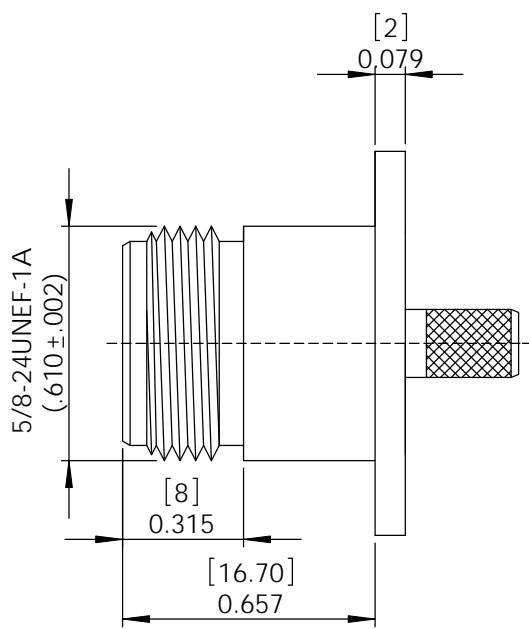
5/8-24UNEF-1A
(.610 ± .002)



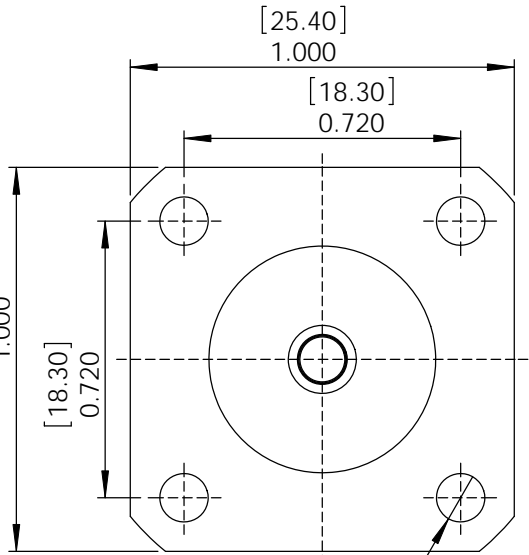
RECOMMENDED
FERRULE
CRIMP SIZE



RECOMMENDED
PIN
CRIMP SIZE



RECOMMENDED CABLE
STRIPPING



NOTES:

ELECTRICAL:

IMPEDENCE: 50 OHMS
 WITHSTAND VOLTAGE: 1500V
 FREQUENCY RANGE: 0~6 GHz
 VSWR: <1.50 @ 0~6 GHz
 DURABILITY: ≥ 500 CYCLE
 CABLE RETENTION: > 40 POUNDS

MISCELLANEOUS:

COMPONENTS SHALL BE INDIVIDUALLY PACKAGED IN ACCORDANCE WITH L-COM SPECIFICATIONS PS-0031.

ALL DIMENSIONS ARE FOR REFERENCE ONLY.

RoHS Compliant

UNLESS OTHERWISE SPECIFIED, DIMENSIONS ARE IN INCHES [mm] DIMENSIONAL TOLERANCES: .X = ±.1 .XX = ±.01 .XXX = ±.005 ANGULAR TOLERANCES: ALL = ± 1° PROJECTION	APPROVALS DRAWN BY B.Puchaski	DATE 12/28/09	45 BEECHWOOD DRIVE NORTH ANDOVER, MA 01845	
	CHECKED BY M.Audas	12/28/09		CATEGORY CONNECTOR
	APPROVED BY M.Audas	12/28/09	PRODUCT DESCRIPTION N FEMALE PANEL MOUNT CRIMP FOR RG58 /LMR195	
	COLOR VARIATIONS MAY OCCUR	SIZE A	FSCM NO. 43321	DWG. NO. ANF-5700
SCALE: NONE		CAD FILE: ANF-5700.SLDDRW		
SHEET 1 OF 1			REV. C	