

6

5

4

3

2

1

F

E

D

C

B

A

F

E

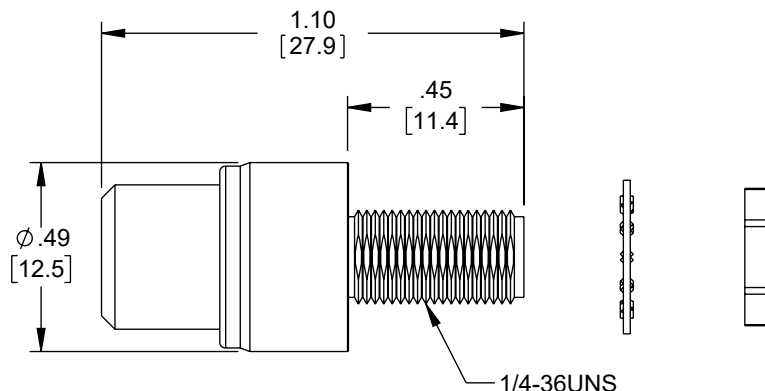
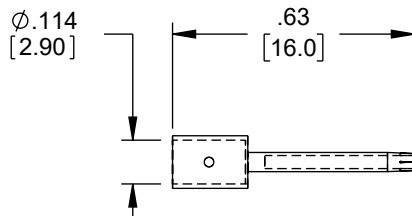
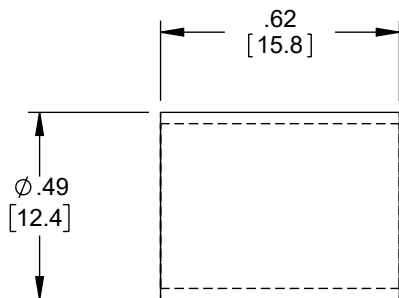
D

C

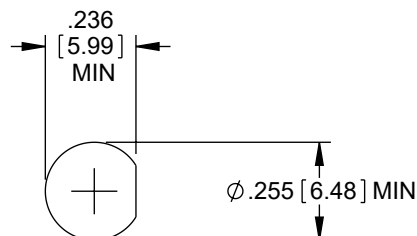
B

A

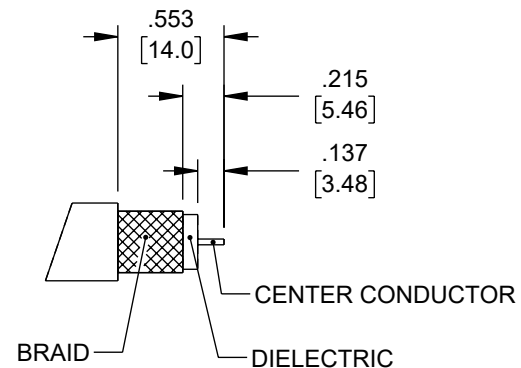
REVISION					
ZONE	REV	DESCRIPTION	DATE	CHANGED BY	APPROVED
	C	ECO-14608	05/27/2025	KGLEBOVA	DWANG



RECOMMENDED FERRULE
CRIMP SIZE
*CENTER PIN: SOLDER



RECOMMENDED
MOUNTING HOLE



RECOMMENDED
STRIPPING DIMENSIONS

NOTES:

- MATERIALS:**
BODY: BRASS
FERRULE: BRASS
PIN: P. BRONZE
INSULATOR: PTFE.
- FINISH:**
BODY: NICKEL PLATE, 100μ INCHES MIN.
FERRULE: NICKEL PLATE, 100μ INCHES MIN.
INNER CONTACT: NICKEL PLATE, 100μ INCHES MIN.
GOLD PLATE: 5μ INCHES MIN OVER NICKEL PLATE.
- ALL DIMENSIONS ARE FOR REFERENCE ONLY.**
- APPLICATION: LMR400 CABLE ASSEMBLIES.**
- IMPEDANCE: 50 OHM.**
- CONNECTOR SHALL BE INDIVIDUALLY PACKAGED IN ACCORDANCE WITH L-COM SPECIFICATION PS-0031.**

REGULATORY COMPLIANCE:
EU RoHS DIRECTIVE (MOST RECENT RELEASED VERSION).

THE INFORMATION CONTAINED IN THIS DRAWING IS THE SOLE PROPERTY OF INFINITE ELECTRONICS, INC. ANY REPRODUCTION IN PART OR WHOLE WITHOUT THE WRITTEN PERMISSION OF INFINITE ELECTRONICS, INC. IS PROHIBITED. THESE COMMODITIES, TECHNOLOGY OR SOFTWARE WERE EXPORTED FROM THE UNITED STATES IN ACCORDANCE WITH THE EXPORT ADMINISTRATION REGULATIONS. DIVERSION CONTRARY TO U.S. LAW PROHIBITED.

6

5

4

3

2

1

UNLESS OTHERWISE SPECIFIED
LEADING DIMENSIONS ARE INCHES
DIMENSIONS IN [] ARE MILLIMETERS

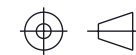
TOLERANCES:
X = ±.2 [5]
.XX = ±.02 [0.5]
.XXX = ±.005 [0.13]
FRACTIONS
± 1/32
ANGLES ± 1°

CABLE LENGTH TOLERANCES:
≤12 [305] = +1 [25] / -0
>12 [305] ≤ 60 [1524] = +2 [51] / -0
>60 [1524] ≤ 120 [3048] = +4 [102] / -0
>120 [3048] ≤ 300 [7620] = +6 [152] / -0
>300 [7620] = +5% / -0

ALL DIMENSIONS ARE FOR REFERENCE ONLY
AND SUBJECT TO CHANGE WITHOUT NOTICE.
UN-DIMENSIONED/NON-CRITICAL FEATURES
MAY VARY IN SIZE AND LOCATION
COLORS MAY VARY

L-com
an INFINIT® brand

Website: www.L-com.com
Phone: 1.800.341.5266 | 1.978.682.6936



INTERPRET ALL DIMENSIONS AND
TOLERANCES PER ASME Y14.5

SCALE
NONE
SHEET
1 OF 1

DESCRIPTION				
CONN SMA F LMR400 CRIMP				
SIZE	CAGE CODE	DRAWN BY	ITEM NO.	REV
A	43321	C.MCCORMICK	HPC403	C