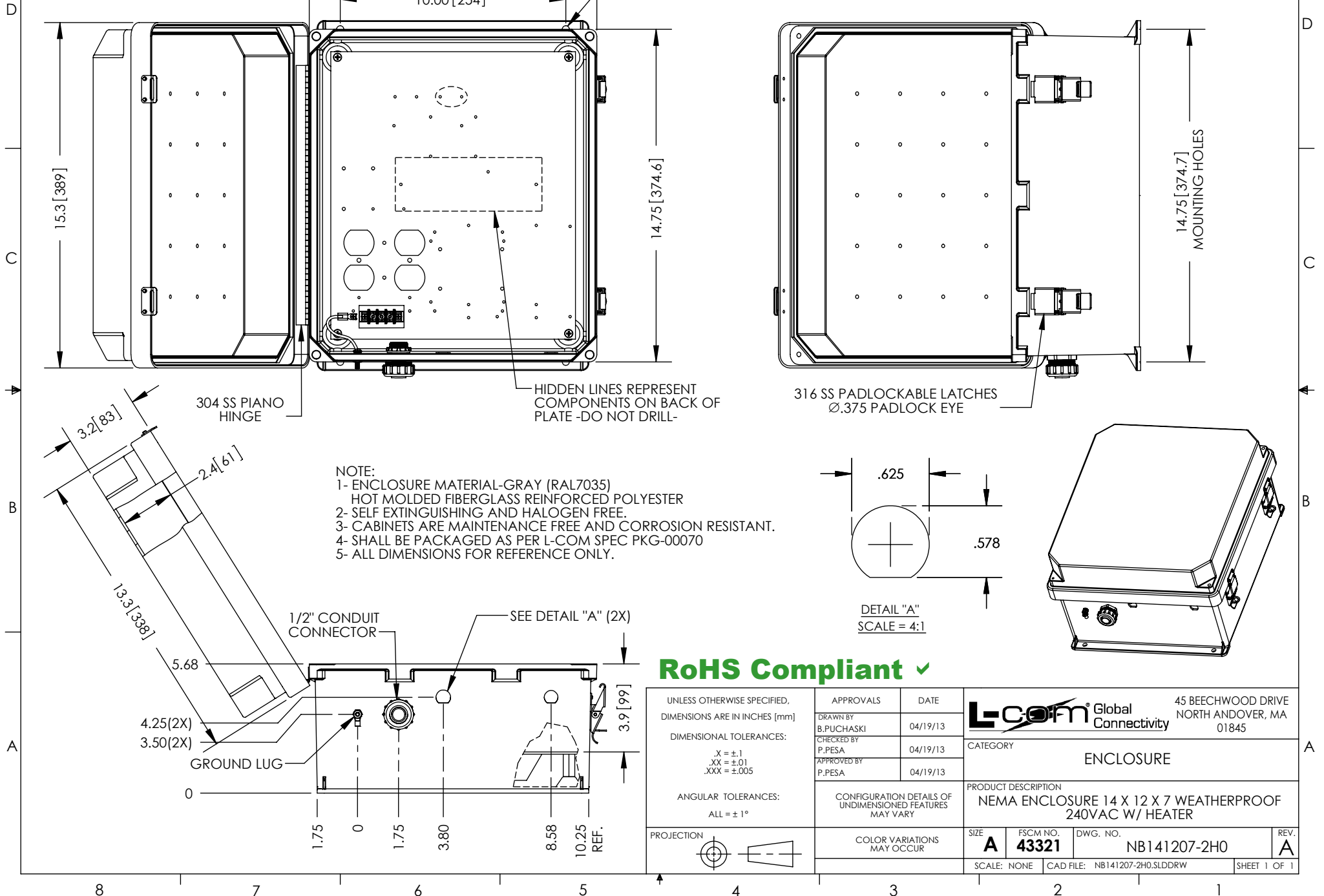


THE INFORMATION CONTAINED IN THIS DRAWING IS THE SOLE PROPERTY OF L-COM, INC. ANY REPRODUCTION IN PART OR WHOLE WITHOUT THE WRITTEN PERMISSION OF L-COM, INC. IS PROHIBITED.

REVISIONS			
REV	DESCRIPTION	DATE	APPROVED
A	INITIAL RELEASE	4/22/13	D.GRIFFIN
-	-	-	-
-	-	-	-



RoHS Compliant ✓

UNLESS OTHERWISE SPECIFIED, DIMENSIONS ARE IN INCHES [mm]  DIMENSIONAL TOLERANCES: .X = ±.1 .XX = ±.01 .XXX = ±.005  ANGULAR TOLERANCES: ALL = ± 1°  PROJECTION	APPROVALS	DATE	<b>L-com</b> Global Connectivity 45 BEECHWOOD DRIVE NORTH ANDOVER, MA 01845
	DRAWN BY B.PUCHASKI	04/19/13	
	CHECKED BY P.PESA	04/19/13	
	APPROVED BY P.PESA	04/19/13	
CONFIGURATION DETAILS OF UNDIMENSIONED FEATURES MAY VARY	CATEGORY		ENCLOSURE
	PRODUCT DESCRIPTION		NEMA ENCLOSURE 14 X 12 X 7 WEATHERPROOF 240VAC W/ HEATER
	COLOR VARIATIONS MAY OCCUR		
SIZE <b>A</b>	FSCM NO. <b>43321</b>	DWG. NO. <b>NB141207-2H0</b>	REV. <b>A</b>
SCALE: NONE	CAD FILE: NB141207-2H0.SLDDRW		SHEET 1 OF 1