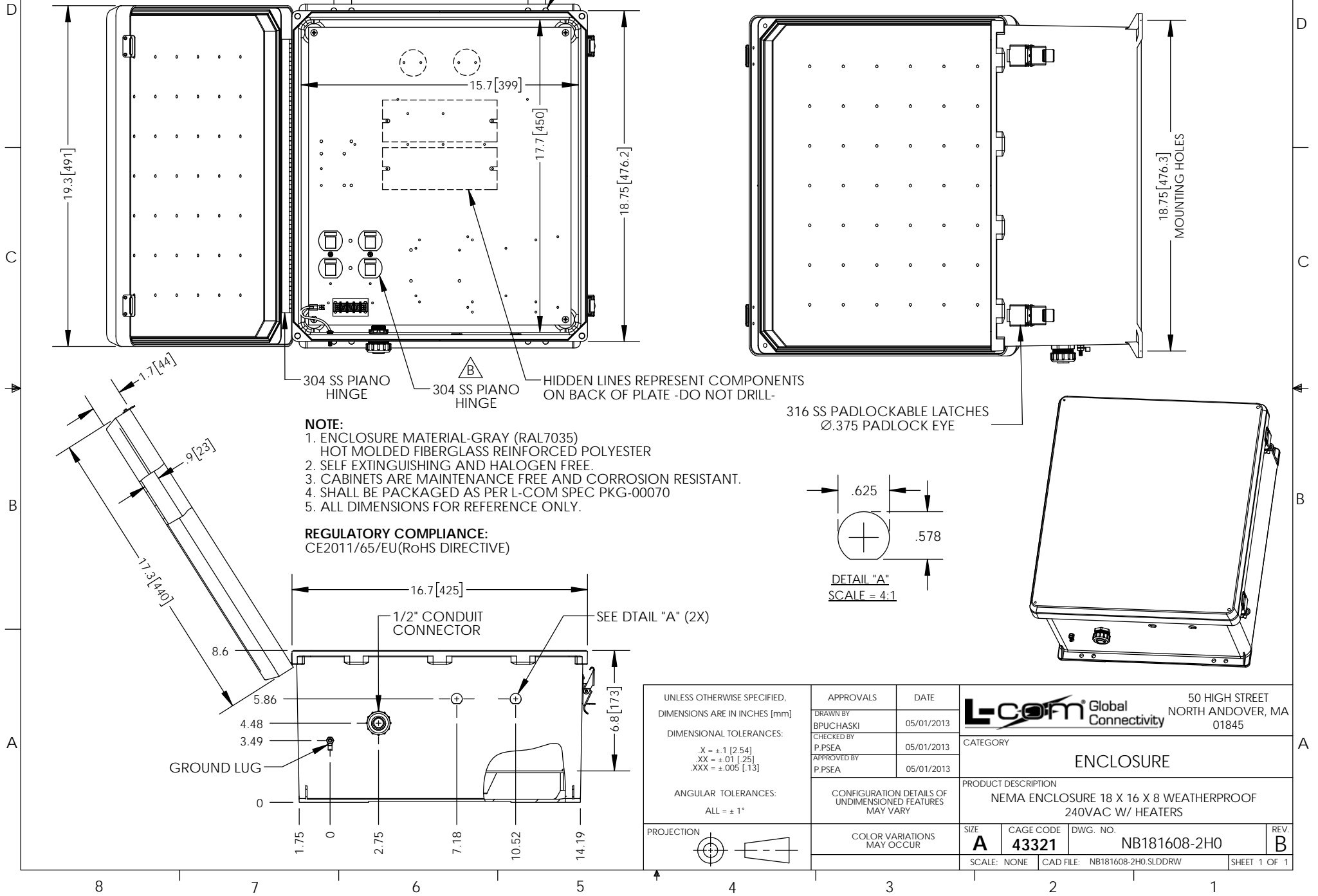


THE INFORMATION CONTAINED IN THIS DRAWING IS THE SOLE PROPERTY OF L-COM, INC. ANY REPRODUCTION IN PART OR WHOLE WITHOUT THE WRITTEN PERMISSION OF L-COM, INC. IS PROHIBITED.

REVISIONS			
REV	DESCRIPTION	DATE	APPROVED
A	INITIAL RELEASE	05/01/2013	BPUCHASKI
B	ECN 9385 ADDED DUPLEX OUTLET HOLE FILLER	08/30/2018	BPUCHASKI



UNLESS OTHERWISE SPECIFIED, DIMENSIONS ARE IN INCHES [mm]  DIMENSIONAL TOLERANCES: .X = ±.1 [2.54] .XX = ±.01 [.25] .XXX = ±.005 [.13]  ANGULAR TOLERANCES: ALL = ± 1°  PROJECTION	APPROVALS	DATE	<b>L-com</b> Global Connectivity 50 HIGH STREET NORTH ANDOVER, MA 01845
	DRAWN BY BPUCHASKI	05/01/2013	
	CHECKED BY P.PSEA	05/01/2013	
	APPROVED BY P.PSEA	05/01/2013	
CONFIGURATION DETAILS OF UNDIMENSIONED FEATURES MAY VARY  COLOR VARIATIONS MAY OCCUR	CATEGORY		ENCLOSURE
	PRODUCT DESCRIPTION		NEMA ENCLOSURE 18 X 16 X 8 WEATHERPROOF 240VAC W/ HEATERS
	SIZE <b>A</b>	CAGE CODE <b>43321</b>	DWG. NO. <b>NB181608-2H0</b>
	SCALE: NONE	CAD FILE: NB181608-2H0.SLDRW	SHEET 1 OF 1