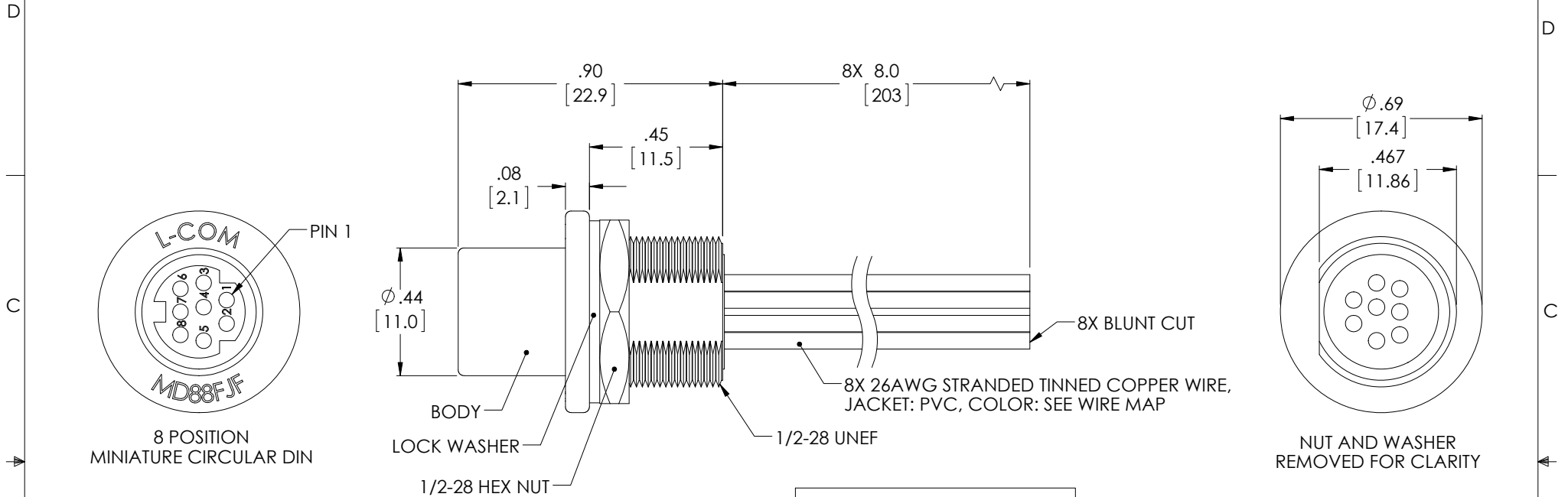


THE INFORMATION CONTAINED IN THIS DRAWING IS THE SOLE PROPERTY OF L-COM, INC. ANY REPRODUCTION IN PART OR WHOLE WITHOUT THE WRITTEN PERMISSION OF L-COM, INC. IS PROHIBITED.

REVISIONS			
REV	DESCRIPTION	DATE	APPROVED
A	DRAWING REPLACES MD88FJF-OD1	10/13/14	D. DESJARDIN

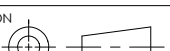



NOTES:

1. THE D-FLAT ON THE THREADED BARREL OF ADAPTOR MUST BE ALIGNED AS SHOWN ABOVE.
2. FINISH OF EXTERNAL METAL PARTS NICKEL PLATED.
3. REAR OF HOUSING IS POTTED.
MATERIAL: SILICONE RESIN CONFORMAL COATING, COLOR; BLACK
4. CABLE ASSEMBLY SHALL BE TESTED FOR CONTINUITY.
5. CABLE ASSEMBLY SHALL BE INDIVIDUALLY PACKAGED IN ACCORDANCE WITH L-COM SPECIFICATION PS-0031.

REGULATORY COMPLIANCE:
CE2011/65/EU(RoHS DIRECTIVE)

WIRE MAP	
PIN NUMBER	WIRE COLOR
PIN 1	BLACK
PIN 2	WHITE
PIN 3	RED
PIN 4	GREEN
PIN 5	BROWN
PIN 6	BLUE
PIN 7	YELLOW
PIN 8	PURPLE

UNLESS OTHERWISE SPECIFIED, DIMENSIONS ARE IN INCHES [mm] OVERALL CABLE LENGTH TOLERANCE: ≤12 [305] = +1 [25] / -0 >12 [305] ≤60 [1524] = +2 [51] / -0 >60 [1524] ≤120 [3048] = +4 [102] / -0 >120 [3048] ≤300 [7620] = +6 [152] / -0 >300 [7620] = +3% / -0% ALL OTHER DIMENSIONAL TOLERANCES: .X = ±.2 [5.08] .XX = ±.02 [51] .XXX = ±.005 [13] PROJECTION 	APPROVALS	DATE	 45 BEECHWOOD DRIVE NORTH ANDOVER, MA 01845		
	DRAWN BY RON CARRICK	12/28/99			
	CHECKED BY AFC	12/28/99	CATEGORY	I/O PRODUCTS	
	APPROVED BY AFC	12/28/99	PRODUCT DESCRIPTION		
	CONFIGURATION DETAILS OF UNDIMENSIONED FEATURES MAY VARY		ADPT, MD8F/LEADS BLKHD FRT MNT		
	COLOR VARIATIONS MAY OCCUR	SIZE A	FSCM NO. 43321	DWG. NO. MD88FJF	REV. A
		SCALE: NONE	CAD FILE: MD88FJF.SLDDRW	SHEET 1 OF 1	